

Pacific States Marine Fisheries Commission

John Day Dam Condition Monitoring Weekly Report, #22-14

Report Period: 7/2 – 7/8, 2022

Project Leader: Rick Martinson

Prepared By: Gregory Kovalchuk and Aaron Young



SECTION 1. River Flow and Sampling Results

	Min	Max	Mean		
			Current	Last Week	2021
A. River Flow	242.4	284.3	261.3	372.2	172.0
B. Powerhouse	156.9	185.7	169.7	211.0	111.5
C. Spill (kcfs)	84.1	97.4	90.6	160.2	59.5
% of River Flow	34.3	35.2	34.7	42.8	34.5
D. Water Temp *	62.7	65.3	63.8	62.1	69.8
E. % Saturation *	111.4	114.6	113.2	118.6	105.3

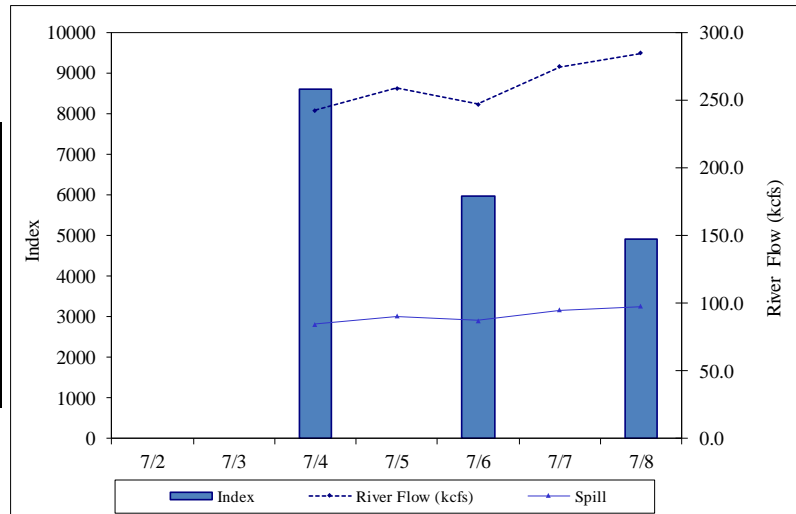
* TDG data from USGS forebay sensor, water temp from lab and USGS sensor.

% SAMPLE COMPOSITION	This Week	Last Week
YEARLING CHINOOK	1.6%	0.8%
SUBYEARLING CHINOOK	98.4%	98.8%
CHINOOK FRY	0.0%	0.0%
UNCLIPPED STEELHEAD	0.0%	0.0%
CLIPPED STEELHEAD	0.0%	0.0%
COHO	0.0%	0.0%
COHO FRY	0.0%	0.0%
SOCKEYE	0.0%	0.4%

End Date	Sample Rate	YEARLING CHINOOK					SUBYEARLING CHINOOK					COHO				
		# Smpld	% Desc	% Mort	# Coll	Index	# Smpld	% Desc	% Mort	# Coll	Index	# Smpld	% Desc	% Mort	# Coll	Index
7/2																
7/3																
7/4	1.8%	0	0.0	0.0	0	0	100	2.0	0.0	5,600	8,602	0	0.0	0.0	0	0
7/5																
7/6	3.0%	5	0.0	0.0	100	155	111	1.8	0.0	3,750	5,797	0	0.0	0.0	0	0
7/7																
7/8	3.2%	0	0.0	0.0	0	0	102	1.0	0.0	3,225	4,917	0	0.0	0.0	0	0
Weekly		5	0.0	0.0	100	155	313	1.6	0.0	12,575	19,315	0	0.0	0.0	0	0
Season to date		4,671	2.3	0.1	47,704	114,579	2,498	1.4	0.1	71,100	130,923	482	1.9	0.2	5,750	13,608

End Date	Sample Rate	UNCLIPPED STEELHEAD					CLIPPED STEELHEAD					SOCKEYE				
		# Smpld	% Desc	% Mort	# Coll	Index	# Smpld	% Desc	% Mort	# Coll	Index	# Smpld	% Desc	% Mort	# Coll	Index
7/2																
7/3																
7/4	1.8%	0	0.0	0.0	0	0	0	0.0	0.0	0	0	0	0.0	0.0	0	0
7/5																
7/6	3.0%	0	0.0	0.0	0	0	0	0.0	0.0	0	0	0	0.0	0.0	0	0
7/7																
7/8	3.2%	0	0.0	0.0	0	0	0	0.0	0.0	0	0	0	0.0	0.0	0	0
Weekly		0	0.0	0.0	0	0	0	0.0	0.0	0	0	0	0.0	0.0	0	0
Season to date		333	2.1	0.0	4,386	11,063	1,123	6.5	0.2	12,088	29,055	1,141	3.2	0.2	24,141	59,991

End Date	Sample Rate	TOTAL				
		# Smpld	% Desc	% Mort	# Coll	Index
7/2						
7/3						
7/4	1.8%	100	2.0	0.0	5,600	8,602
7/5						
7/6	3.0%	116	1.7	0.0	3,850	5,952
7/7						
7/8	3.2%	102	1.0	0.0	3,225	4,917
Weekly		318	1.6	0.0	12,675	19,470
Season to date		10,248	2.6	0.1	165,169	359,219



Notes: Condition percentages are calculated from sample numbers.
Subyearling chinook and coho include fry.

SECTION 3. Incidental Summary

	Bass Largemouth	Bass Smallmouth	Bluegill and Pumpkinseed	Bullhead	Carp	Catfish, Channel	Chiselmouth	Crappie species
This Week	0	2	0	0	0	0	0	0
Season to Date	1	19	11	1	2	1	0	6

	Dace - Longnose	Dace - Speckled	Chinook Jack	Kokanee	Lamprey Adult	Northern Pikeminnow	Peamouth	Perch Yellow
This Week	0	0	0	0	0	0	0	1
Season to Date	0	0	1	0	1	0	0	360

	Redside Shiner	Sand Roller	Sculpin species	Stickleback 3 spine	Sucker species	Shad Adult	Shad Juvenile	Sturgeon White
This Week	0	0	1	0	0	0	0	0
Season to Date	0	0	9	6	1	0	0	0

	Trout Bull	Trout Cutthroat	Trout Rainbow	Walleye	Whitefish Mountain	Siberian Prawn	Chum Salmon	Banded Killifish
This Week	0	0	0	1	0	1	0	0
Season to Date	0	0	0	30	6	119	0	5

SECTION 4. Facility Operations

Condition Monitoring at John Day Dam was reduced to 3 days per week (M, W, F) until river water temperatures reach 70 deg. F. Samples were taken from the Juvenile Bypass System between approximately 0700 and 1300 hrs. Collection, Index, and River flow estimates and averages are for the sample period only. Condition Exams targeted approximately 100 of the predominant species of out-migrant, currently Subyearling Fall Chinook (98.4% composition). Debris at the separator bars and in the sample holding tank was moderate to low for the week and consisted of sticks, plastic, and pieces of terrestrial vegetation.

SECTION 5. Research

No research activity occurred during this report period.

SECTION 6. Pictures



Hatchery Subyearling fall Chinook smolt (*Oncorhynchus tshawytscha*) with a facial deformity, approximately 102 mm fork length, sampled at the John Day Dam Smolt Facility on 23 June, 2022.



Detail of deformity from specimen above.